



UNIONE EUROPEA
Fondo sociale europeo



Regione
Lombardia



POR FSE 2014-2020 / OPPORTUNITÀ E INCLUSIONE

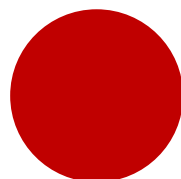
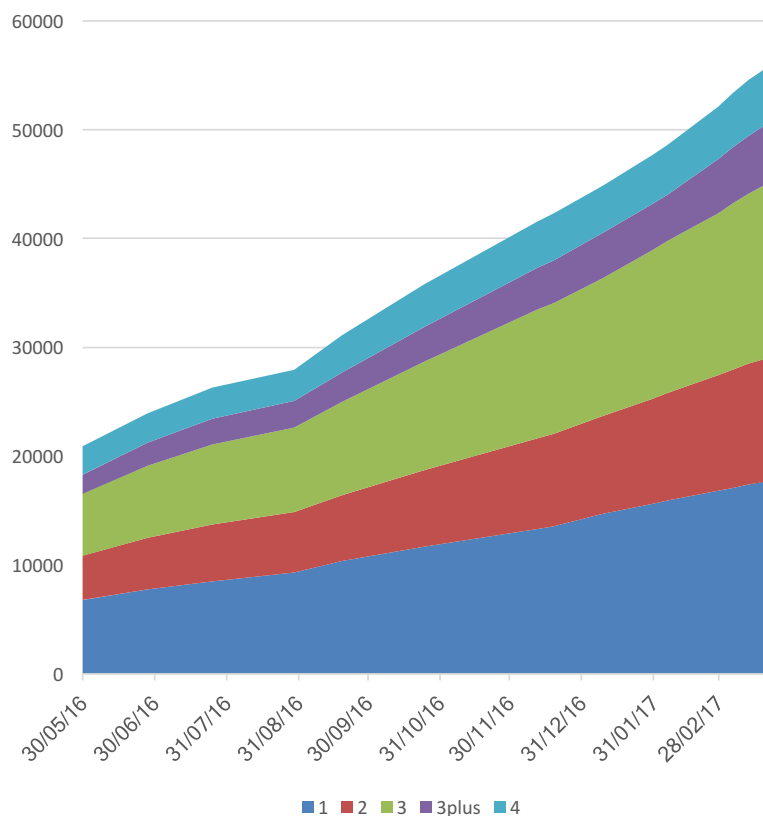
Dote Unica Lavoro FSE POR 14-20

Monitoraggio

Aggiornamento del 24 Aprile 2017

DUL

Andamento assegnazione doti per fascia



TOTALE PRENOTATO 107.937.485,88 €



60.597
Doti prenotate



1.728,03 €
Valore medio della dote



209
Operatori accreditati coinvolti

Prenotato per fascia



FASCIA 1

14.392.139,96 €



FASCIA 2

17.454.228,42 €



FASCIA 3

41.513.462,31 €

Prenotato a oggi
73.359.830,69 €



FASCIA 3
PLUS

28.998.873,51 €

Prenotato ad oggi
28.998.873,51 €



FASCIA 4

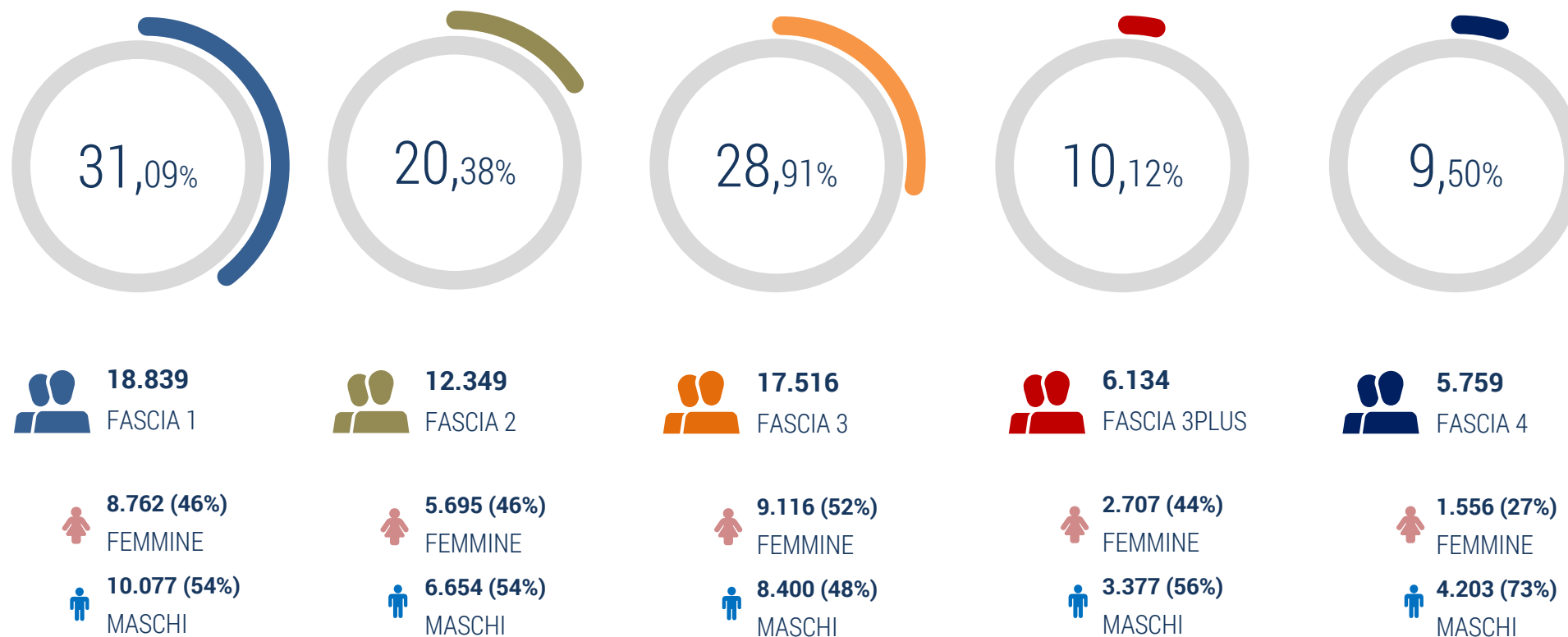
5.578.781,69 €

Prenotato ad oggi
5.578.781,69 €

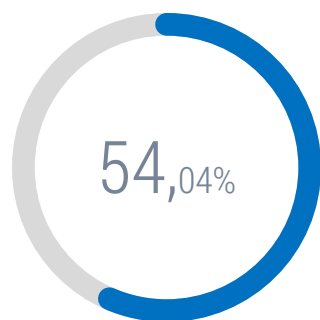
Destinatari per provincia

Provincia	Fascia 1	Fascia 2	Fascia 3	Fascia 3 Plus	Fascia 4	TOT	%
BG	1.249	1.101	2.217	879	187	5.633	9,30%
BS	1.727	1.245	1.830	935	219	5.956	9,83%
CO	843	528	763	100	218	2.452	4,05%
CR	520	316	465	59	13	1.373	2,27%
LC	724	429	390	59	119	1.721	2,84%
LO	400	264	399	48	47	1.158	1,91%
MB	1.746	974	1.560	534	1.872	6.686	11,03%
MI	8.102	5.376	6.631	2091	2.685	24.885	41,07%
MN	855	558	898	165	135	2.611	4,31%
PV	893	466	645	860	58	2.922	4,82%
SO	91	109	244	51	41	536	0,88%
VA	1.689	983	1.474	353	165	4.664	7,70%
Totale	18.839	12.349	17.516	6134	5.759	60.597	100,00%

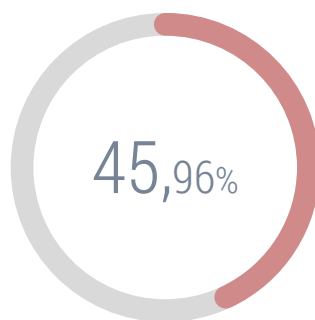
Destinatari per fascia



Destinatari per genere

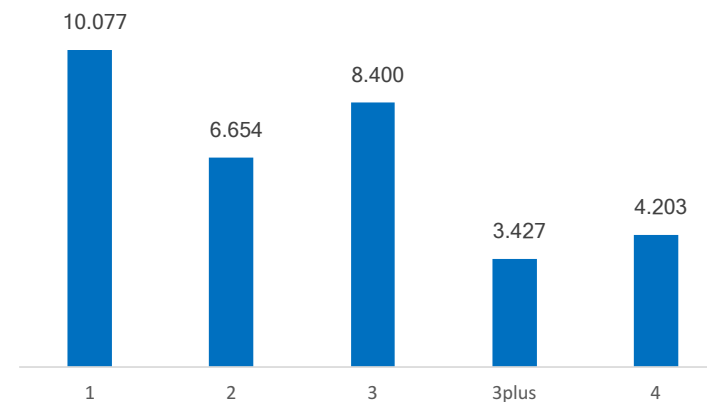


32.761
MASCHI

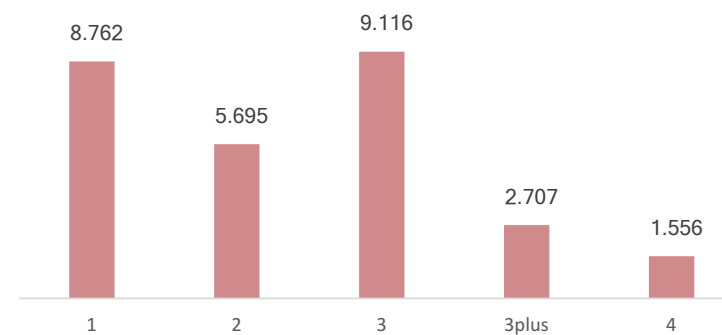


27.836
FEMMINE

MASCHI PER FASCIA



FEMMINE PER FASCIA



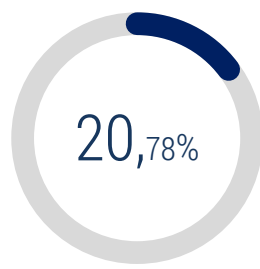
Destinatari per età



2.522
Età 15-24

954 (38%)
FEMMINE

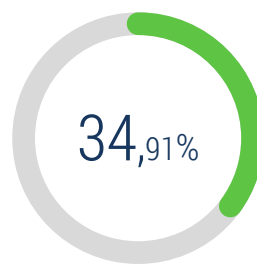
1.568 (62%)
MASCHI



12.591
Età 25-34

5.931 (47%)
FEMMINE

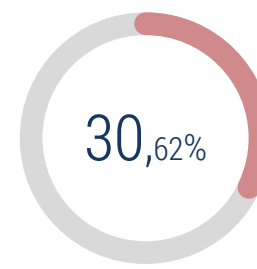
6.660 (53%)
MASCHI



21.153
Età 35-44

10.343 (49%)
FEMMINE

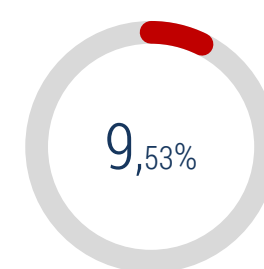
10.810 (51%)
MASCHI



18.556
Età 45-54

8.454 (45%)
FEMMINE

10.102 (55%)
MASCHI

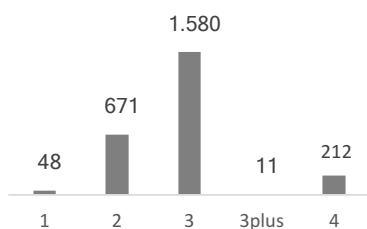


5.775
Età >55

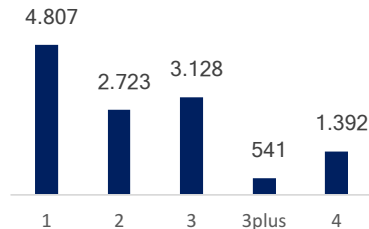
2.154 (37%)
FEMMINE

3.621 (63%)
MASCHI

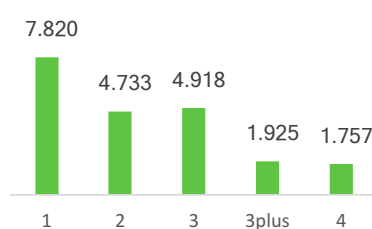
ETA' 15-24 PER FASCIA



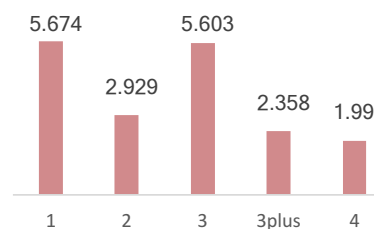
ETA' 25-34- PER FASCIA



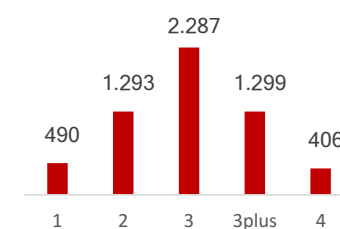
ETA' 35-44 PER FASCIA



ETA' 45-54 PER FASCIA



ETA' >55 PER FASCIA



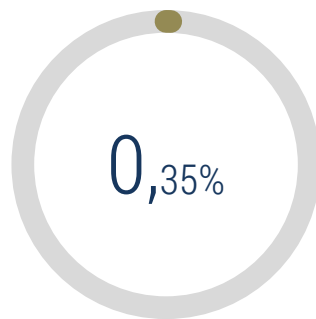
Destinatari per condizione occupazionale



 **54.887**
DISOCCUPATI


 **26.334 (48%)**
FEMMINE

 **28.553 (52%)**
MASCHI



 **210**
NON OCCUPATI

 **145 (70%)**
FEMMINE

 **65 (30%)**
MASCHI

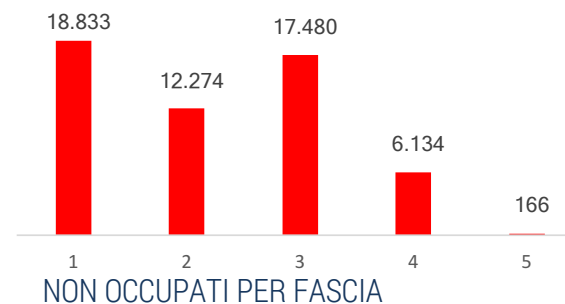


 **5.500**
OCCUPATI

 **1.357 (25%)**
FEMMINE

 **4.143 (75%)**
MASCHI

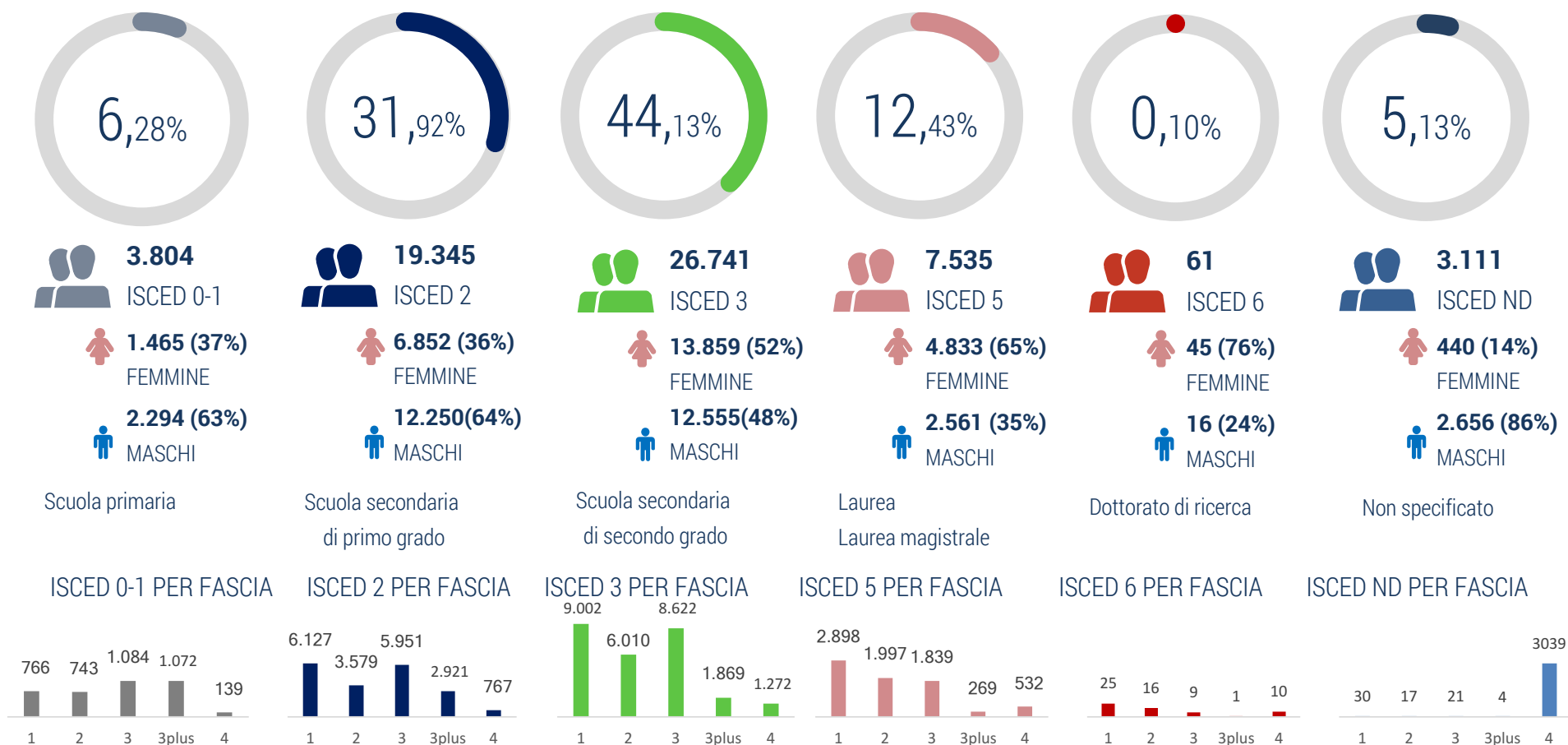
DISOCCUPATI PER FASCIA



OCCUPATI PER FASCIA



Destinatari per titolo di studio



Destinatari per operatore



OPERATORI TOP 10 PER DOTI PRENOTATE

Operatori	N. Doti	Prenotato	% SU TOT
APL	7.693	10.228.621,61 €	10,43%
APL	4.320	5.990.695,24 €	6,11%
APL	3.588	4.314.366,10 €	4,40%
APL	2.919	4.306.837,92 €	4,39%
APL	2.607	3.254.024,00 €	3,32%
AFOL	2.216	4.967.794,48 €	5,06%
ALTRO	1.540	3.702.662,46 €	3,77%
AFOL	1.531	3.102.805,98 €	3,16%
AFOL	1.332	2.592.123,26 €	2,64%
ALTRO	1.330	2.308.679,98 €	2,35%



UNIONE EUROPEA

Fondo sociale europeo



Regione
Lombardia



POR FSE 2014-2020 / OPPORTUNITÀ E INCLUSIONE